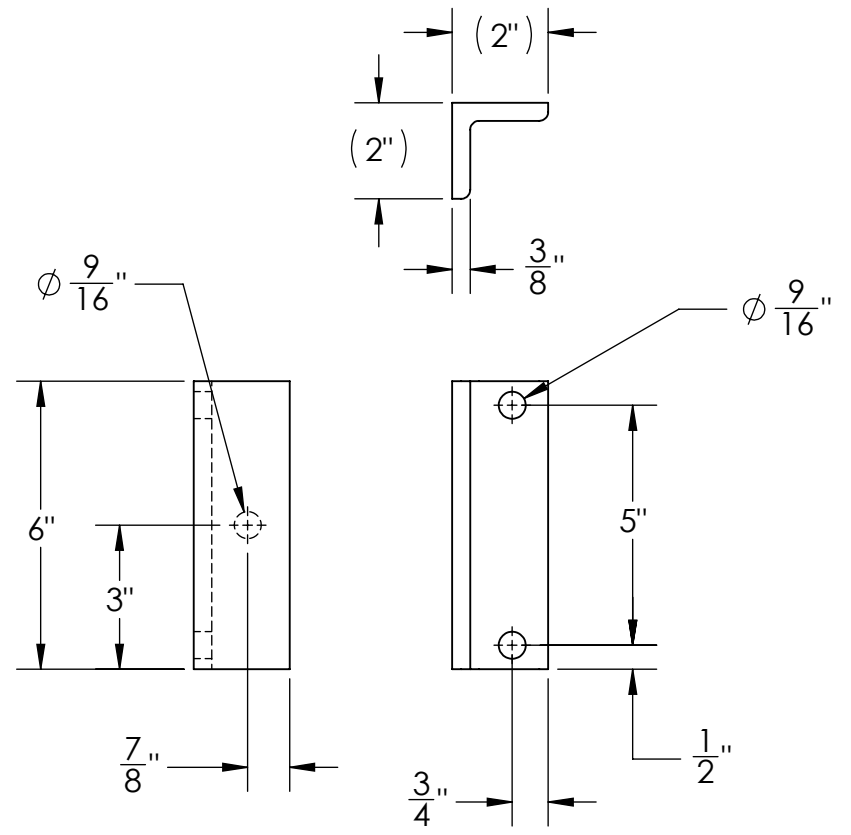
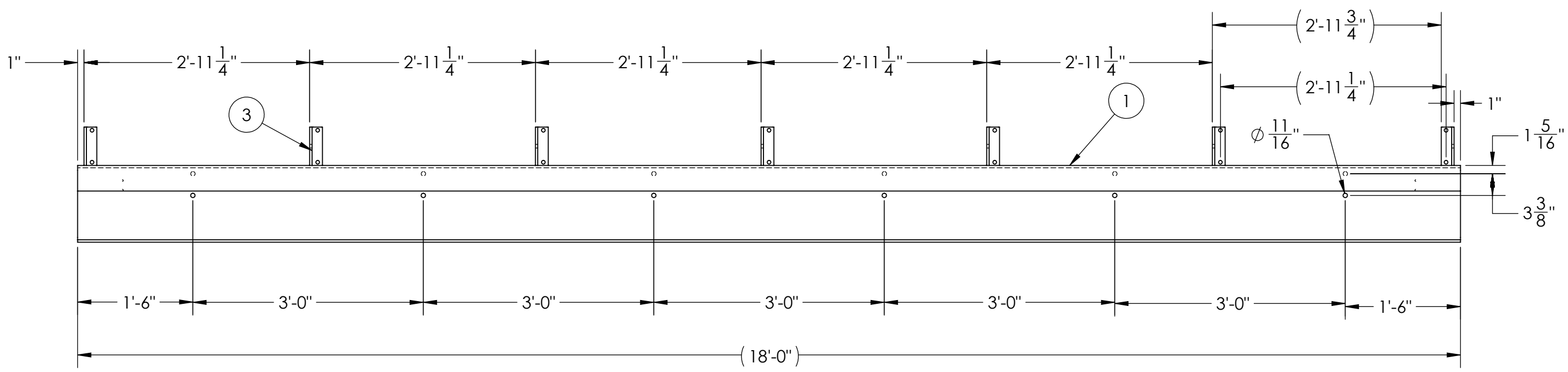


| ITEM NO. | DESCRIPTION | QTY. |
|----------|---------------|------|
| 1 | TRACK | 1 |
| 2 | SWING GATE | 3 |
| 3 | CARRIAGE ASSY | 1 |

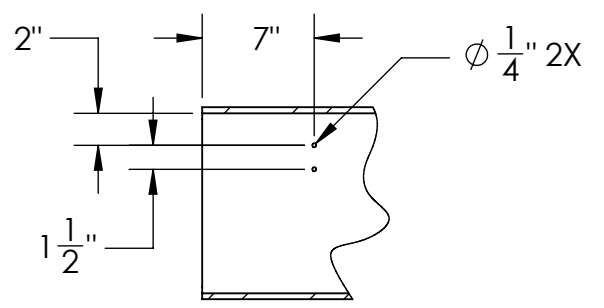
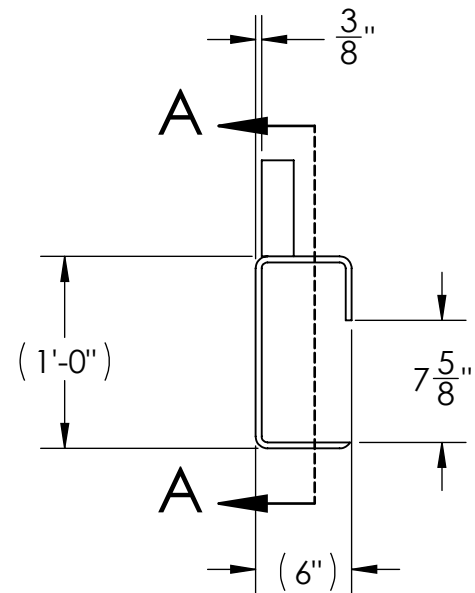
| | | | | |
|--------------------------------------|---------|--|--------------------|--|
| UNLESS OTHERWISE SPECIFIED: | | NAME | DATE | Hemco 2408 Karbach St. Houston, Texas 77092 (713)681-2426 www.hemcoind.com ramping up safety |
| DIMENSIONS ARE IN INCHES | | DRAWN | SJO | |
| TOLERANCES: | | CHECKED | | |
| FRACTIONAL ± | | ENG APPR. | | |
| ANGULAR: MACH ± BEND ± | | MFG APPR. | | |
| TWO PLACE DECIMAL ± | | Q.A. | | |
| THREE PLACE DECIMAL ± | | PROPRIETARY AND CONFIDENTIAL THE INFORMATION CONTAINED IN THIS DRAWING IS THE SOLE PROPERTY OF HEMCO IND. ANY REPRODUCTION IN PART OR AS A WHOLE WITHOUT THE WRITTEN PERMISSION OF HEMCO IND. IS PROHIBITED. | | |
| INTERPRET GEOMETRIC TOLERANCING PER: | | TITLE: 18 FT TRACK AND CARRIAGE ASSY | | |
| MATERIAL | SEE BOM | SIZE | DWG. NO. | REV |
| FINISH | | B | 4200-00 | |
| DO NOT SCALE DRAWING | | SCALE: NTS | WEIGHT: 916.22 LBS | SHEET 1 OF 3 |

- NOTES:
- ALL STEEL IS ASTM A36.
 - ALL STEEL IS HOT DIPPED GALV. ASTM A 153/A 153M, CLASS C.


| ITEM NO. | QTY. | PART NUMBER | DESCRIPTION | LENGTH |
|----------|------|-------------|-------------------------------------|--------|
| 1 | 1 | 100942 | Tubing, Rectangular, 12x6x3/8", A36 | 18' |
| 2 | 1 | 100204 | ANGLE, 2" X 2" X 3/8", A36 | 6" |
| 3 | 6 | 100204 | ANGLE, 2" X 2" X 3/8", A36 | 6" |



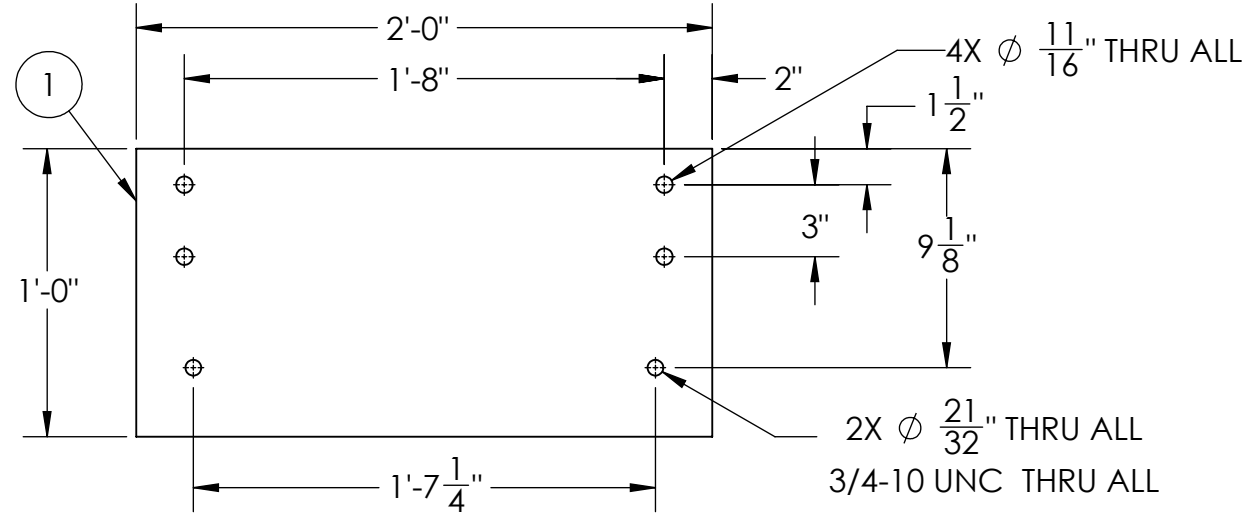
ITEM 2



SECTION A-A
PARTIAL VIEW
TYPICAL BOTH ENDS

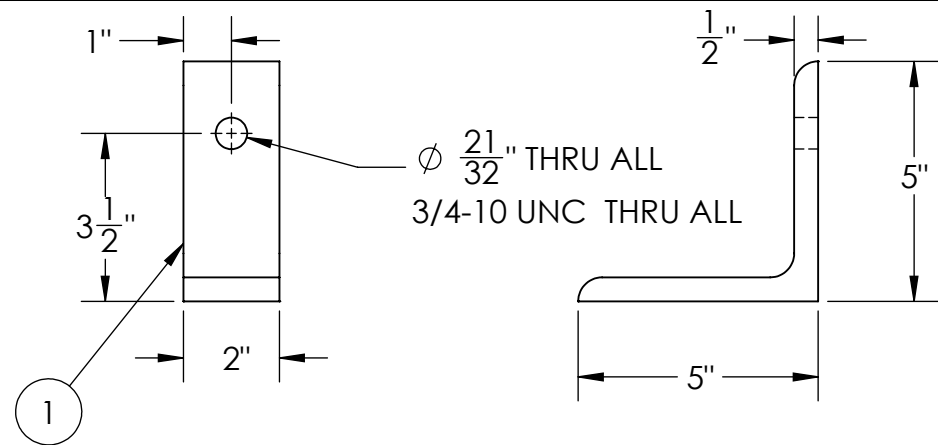
| | | | | | |
|--------------------------------------|--|--|------|------------------------------|---|
| UNLESS OTHERWISE SPECIFIED: | | NAME | DATE | TITLE: | |
| DIMENSIONS ARE IN INCHES | | DRAWN | SJO | 01-20-15 |  Hemco <small>ramping up safety</small> |
| TOLERANCES: | | CHECKED | | | |
| FRACTIONAL ± | | ENG APPR. | | | TITLE: |
| ANGULAR: MACH ± BEND ± | | MFG APPR. | | | 18 FT TRACK AND CARRIAGE ASSEMBLY |
| TWO PLACE DECIMAL ± | | Q.A. | | | SIZE |
| THREE PLACE DECIMAL ± | | PROPRIETARY AND CONFIDENTIAL THE INFORMATION CONTAINED IN THIS DRAWING IS THE SOLE PROPERTY OF HEMCO IND. ANY REPRODUCTION IN PART OR AS A WHOLE WITHOUT THE WRITTEN PERMISSION OF HEMCO IND. IS PROHIBITED. | | DWG. NO. B 4200-00 | REV |
| INTERPRET GEOMETRIC TOLERANCING PER: | | DO NOT SCALE DRAWING | | SCALE: NTS | WEIGHT: NA |
| MATERIAL | | SEE BOM | | SHEET 2 OF 3 | |
| FINISH | | | | | |

| ITEM NO. | QTY. | PART NUMBER | DESCRIPTION | LENGTH |
|----------|------|-------------|------------------------|--------|
| 1 | 1 | 101064 | PLATE, 3/8" X 12", A36 | 2' |



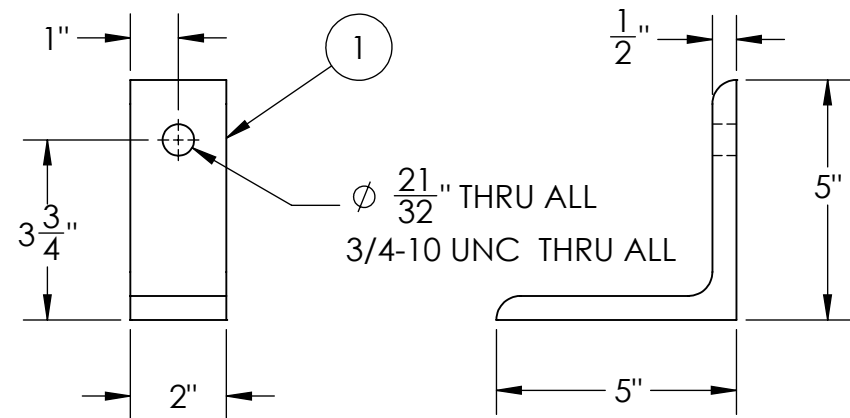
ITEM 1

| ITEM NO. | QTY. | PART NUMBER | DESCRIPTION | LENGTH |
|----------|------|-------------|----------------------------|--------|
| 1 | 1 | 100927 | ANGLE, 5" X 5" X 1/2", A36 | 2" |



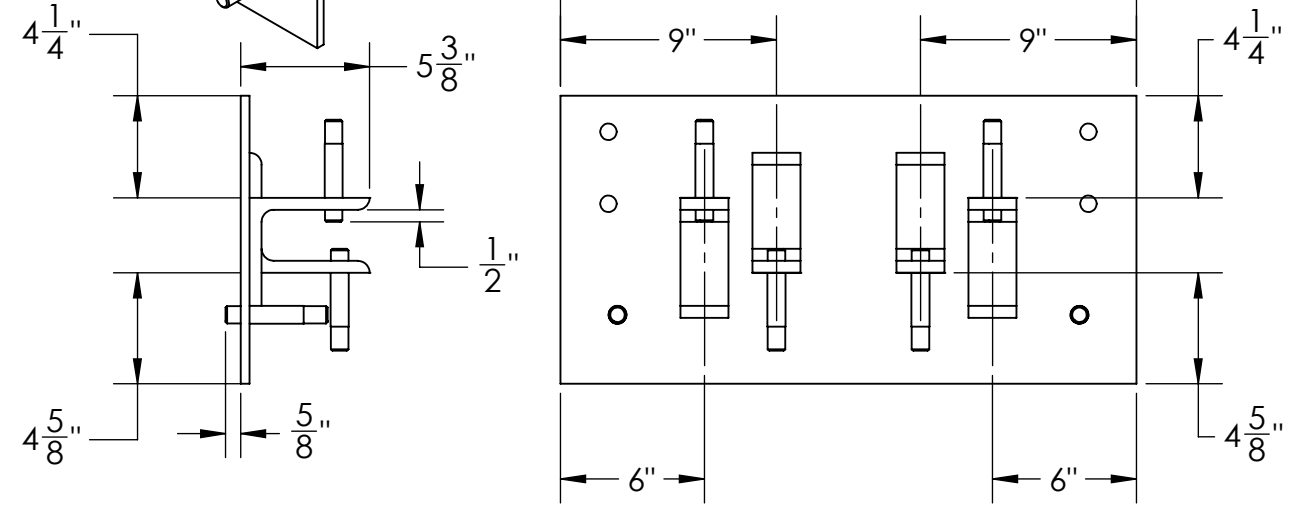
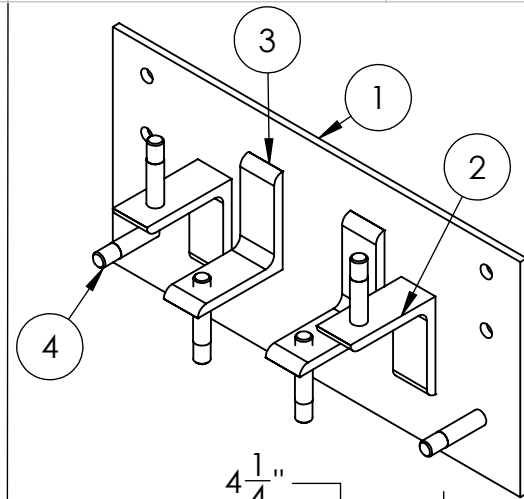
ITEM 2

| ITEM NO. | QTY. | PART NUMBER | DESCRIPTION | LENGTH |
|----------|------|-------------|----------------------------|--------|
| 1 | 1 | 100927 | ANGLE, 5" X 5" X 1/2", A36 | 2" |

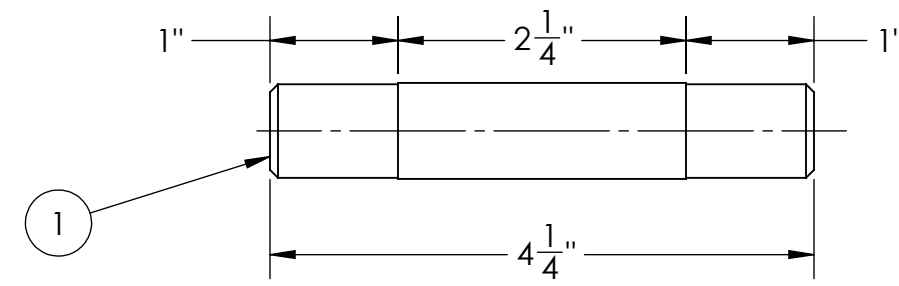


ITEM 3

| ITEM NO. | DESCRIPTION | QTY. |
|----------|---------------|------|
| 1 | BACK PLATE | 1 |
| 2 | UPPER BRACKET | 2 |
| 3 | LOWER BRACKET | 2 |
| 4 | WHEEL MOUNT | 6 |



| ITEM NO. | QTY. | PART NUMBER | DESCRIPTION | LENGTH |
|----------|------|-------------|--------------------------------------|--------|
| 1 | 1 | 100448 | Rod, Pre-Treated, 3/4" Dia Stainless | 4 1/4" |



ITEM 4

| | | | | |
|--------------------------------------|---------|--|-------------|--|
| UNLESS OTHERWISE SPECIFIED: | | NAME | DATE | Hemco 2408 Karbach St. Houston, Texas 77092 (713)681-2426 www.hemcoind.com ramping up safety |
| DIMENSIONS ARE IN INCHES | | DRAWN | SJO | |
| TOLERANCES: | | CHECKED | | |
| FRACTIONAL ± | | ENG APPR. | | |
| ANGULAR: MACH ± BEND ± | | MFG APPR. | | |
| TWO PLACE DECIMAL ± | | Q.A. | | |
| THREE PLACE DECIMAL ± | | PROPRIETARY AND CONFIDENTIAL THE INFORMATION CONTAINED IN THIS DRAWING IS THE SOLE PROPERTY OF HEMCO IND. ANY REPRODUCTION IN PART OR AS A WHOLE WITHOUT THE WRITTEN PERMISSION OF HEMCO IND. IS PROHIBITED. | | TITLE: 18FT TRACK AND CARRIAGE ASSEMBLY |
| INTERPRET GEOMETRIC TOLERANCING PER: | SEE BOM | SIZE | DWG. NO. | REV |
| MATERIAL | | B | 4200-00 | |
| FINISH | | SCALE: NTS | WEIGHT: LBS | SHEET 3 OF 3 |
| DO NOT SCALE DRAWING | | | | |