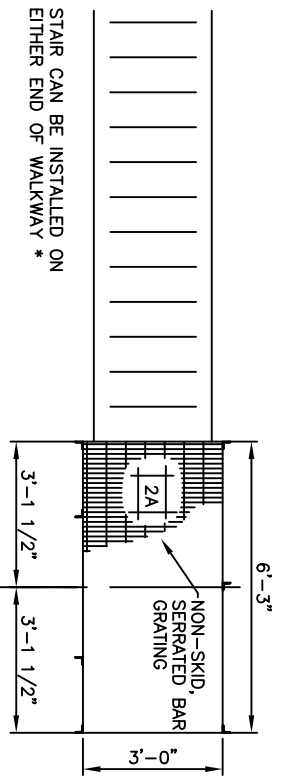


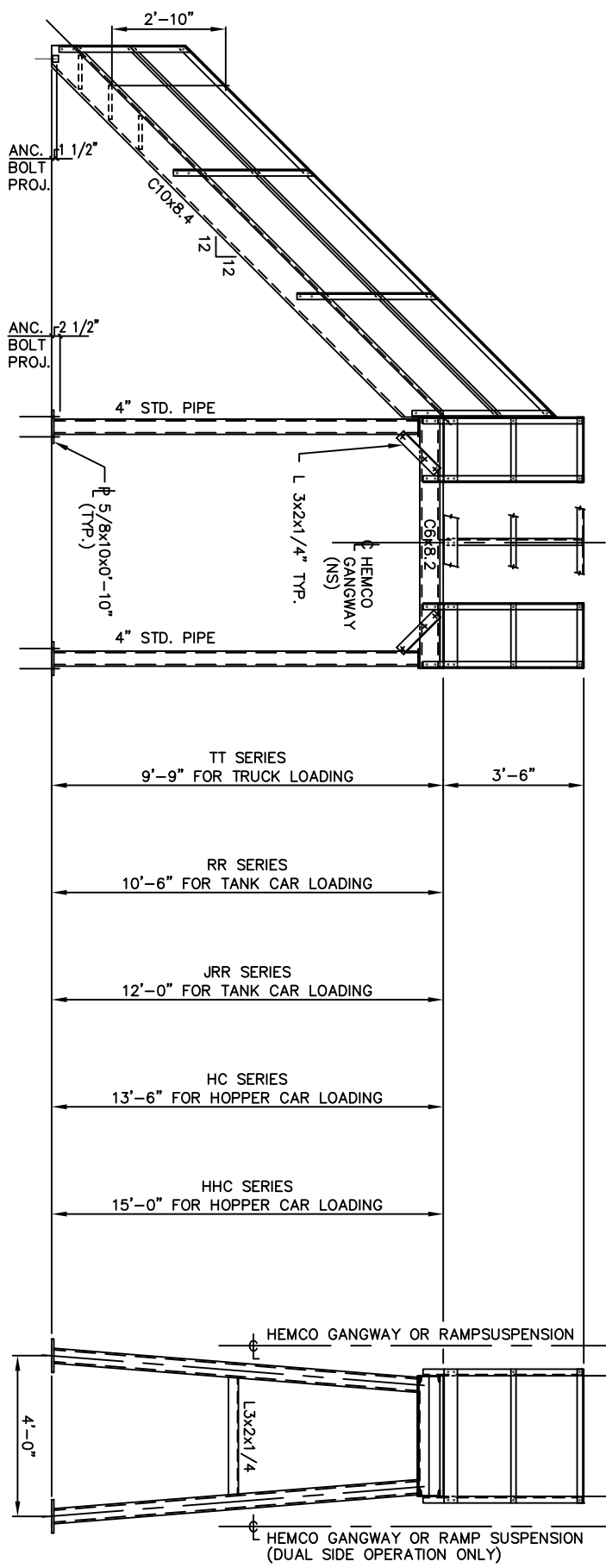
EACH END OF ELEVATED WALKWAY IS FABRICATED WITH THE OPTION OF STAIRS. THEREFORE, THE STAIR CAN BE BOLTED TO EITHER END. CORRESPONDINGLY, THE ELEVATED WALKWAY CAN BE ROTATED 180° TO PLACE THE HEMCO GANGWAY AND OPERATIONS ON EITHER SIDE.

STAIR CAN BE INSTALLED ON EITHER END OF WALKWAY *



DIMENSIONS SHOWN ARE FOR GROUP 3060 RACKS. RACKS ARE ALSO AVAILABLE IN 4'-0"X8'-0" (GROUP 4080) CUSTOM LENGTHS WIDTHS AND HEIGHTS ARE AVAILABLE. MULTIPLE STATION RACKS AND RACKS WITH CANOPIES CAN ALSO BE PROVIDED.

POST	L2x2x1/4
TOP RAIL	L2x2x3/16
MID RAIL	#1/4x11/2
TOE #	#3/16x4
GRAT.	1x3/16 SERRATED



ALL 5/8" Ø ANCHOR BOLTS BY OTHERS

HEMCO INDUSTRIES, INC. 2408 Karbach, Houston, Texas 77092 Tel: (713)681-2420			
HEMCO PREFABRICATED SINGLE STATION LOADING RACKS GROUP 3060			
SCALE	DATE	DRAWN	CHECKED
1/2"=1'-0"	9/24/92	WF	
			DRAWING NUMBER 185A